



Contextual Safeguarding Resources

—

For Education Services

The following resources are for professionals working in Education

They are split into 2 sections; the first section is Practice Guidance, and the second section lists General Guidance by Theme, (Appropriate Language, Child Exploitation, Transitional Safeguarding, Adultification, Cultural Competence and Intersectionality, and Online Safety).

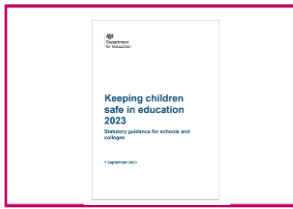
Links to open these resources can be found beneath each image.

Section 1: Practice Guidance

Documents



Working Together to Safeguard Children 2023: Summary of Changes



Keeping Children Safe in Education 2023: Statutory Guidance for Schools and Colleges



Context Assessment Triangles
Original full 2019 guidance with triangles & questions



Assessing Extra Familial Harm & Risk Outside the Home
Short slide deck with updated assessment triangles (2024)



Contextual Safeguarding Network: School Assessments



Contextual Safeguarding: Questions for Schools to Consider



Undertaking Contextual School/College Assessments



Undertaking Contextual School/College Assessments



Undertaking Contextual School Assessments - Assessment Template

Webpages



Education for Safeguarding in West Sussex Schools

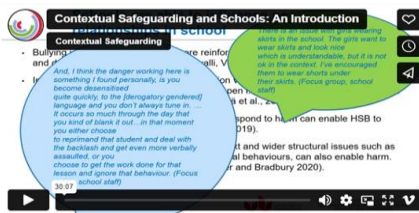


Contextual Safeguarding Programme for Schools: Beyond Referrals

Reporting Concerns:

Sussex Police Partnership Intelligence Form
Sept 2023

Videos



Introductory Webinar to Contextual Safeguarding and Schools - Video

Contextual Safeguarding Network



School Assessment - Video

Contextual Safeguarding Network



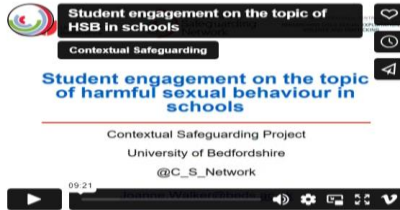
Reviewing Safeguarding and Behaviour Logs in Schools - Video

Contextual Safeguarding Network



Sexting in Schools: Responses to Abuse Through Image Sharing - Video

Contextual Safeguarding Network

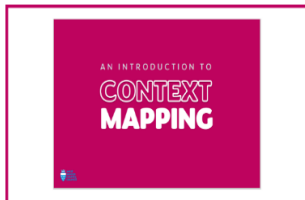


Student Engagement on the Topic of Harmful Sexual Behaviour in Schools - Video

Contextual Safeguarding Network

Contextual Practice Tools

Context Safety Mapping: Helps practitioners to work with children to identify areas of risk and safety and can be used for safety planning with children, families and networks.



An Introduction to Context Mapping



Context Mapping Guidance for Practitioners



An Introduction to Context Mapping - Video



Context Mapping Resources



Undertaking Contextual Peer Assessment Guidance for Practitioners



Undertaking Contextual Peer Assessments and School/College Assessments

This guide will assist you in undertaking contextual assessments concentrating on peer groups and social settings

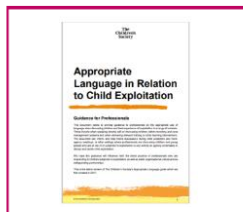
Section 2: General Guidance by Theme

The following resources have been organised by theme.

Appropriate Language



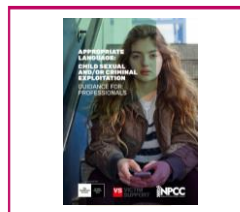
Language in Social Work: Rethinking Our Communication
Video



Appropriate Language in Relation to Child Exploitation: Guidance for Practitioners



Victim Blaming Language
YouTube video produced by Waltham Forest Youth Independent Advisory Group



Appropriate Language: Child Sexual and/or Criminal Exploitation - Guidance for Professionals



Challenging Victim Blaming Language and Behaviours When Dealing with the Online Experiences of Children and Young People

The National Society for the Protection of Cruelty to Children ([NSPCC](#)) also produce blogs about appropriate language within their [Why Language Matters](#) series, some of which are linked below:



Why Language Matters: Why We Should Never Use 'Child Pornography' and Always Say Child Sexual Abuse Material
NSPCC Learning



Why Language Matters: Why We Should Never Use 'Child Pornography' and Always Say Child Sexual Abuse Material
NSPCC Learning



Why Language Matters: How The Label 'Older Boyfriend' Can Mask Child Sexual Exploitation
NSPCC Learning



Digging Deeper Than 'Did Not Attend': The Importance Of Considering Why A Child Was Not Brought To An Appointment
NSPCC Learning



Harmful Sexual Behaviour: Labelling Actions, Not Children
NSPCC Learning

Child Exploitation



Tackling Child Exploitation: Resources Pack
Local Government Association



Children And Young People Trafficked For The Purpose Of Criminal Exploitation In Relation To County Lines A Toolkit For Professionals
The Children's Society



The NWG Network



Types of Abuse
NSPCC

Adultification



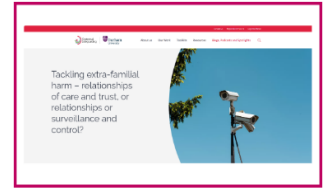
Adultification Bias Within Child Protection and Safeguarding
Jahnine Davis
HM Inspectorate of Probation Academic Insights 2022/06



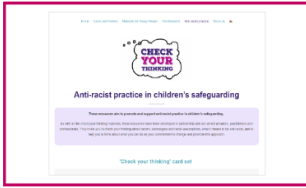
The Lammy Review
Independent review about the treatment of, and outcomes for, Black, Asian and Minority Ethnic individuals in the Criminal Justice System.



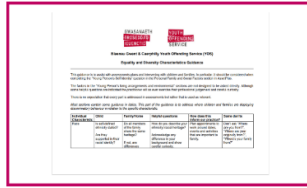
The Experiences of Black and Mixed Heritage Boys in the Youth Justice System
A thematic inspection by HM Inspectorate of Probation, October 2021



Tackling Extra-familial Harm - Relationships of Care and Trust, or Relationships or Surveillance and Control



Anti-racist Practice in Children's Safeguarding
Check Your Thinking



Equality and Diversity Characteristics Guidance
Blaenau, Gwent, and Caerphilly Youth Offending Service



Institutionalised Criminalisation: Black and Minority Ethnic Children and Looked After Children in the Youth Justice System in England and Wales



Adultification Bias of Black Children: Q&A with Jahnine Davis

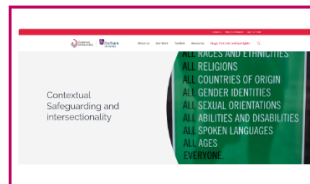
Cultural Competence & Intersectionality



Developing Cultural Competence: PSDP - Resources and Tools



Identifying Elements of Cultural Competence



Contextual Safeguarding and Intersectionality

Online Safety



National Crime Agency: Centre for Child Exploitation & Online Protection
Child Exploitation and Online Protection (CEOP)



Sharing Nudes and Semi-nudes: Advice for Education Settings Working with Children and Young People
Gov.UK



Online Safety Training
NSPCC Learning



Professionals Online Safety Helpline
UK Safer Internet Centre