



West Sussex Safeguarding Children Partnership

Learning and Improvement Framework

Introduction

The West Sussex Safeguarding Children Partnership's (WSSCP) key aim is to ensure that all partner agencies and organisations work together effectively to keep children safe and to promote their emotional health and wellbeing. A child centered outcomes-based approach is fundamental to achieving this.

The WSSCP's **vision** is to become **an assured safeguarding partnership which collectively engages with children and families enabling them to thrive**. This Learning and Improvement Framework supports the Partnership's vision, by ensuring that children, families, and practitioners are fully engaged in taking steps to improve the quality of safeguarding practice.

Measuring the impact of our work at all levels across the partnership is crucial to improving safeguarding and emotional health and wellbeing outcomes for children.

This framework identifies key WSSCP quality improvement methods that the Partnership will use to drive continuous improvement and includes the principles and processes for quality assurance and scrutiny.

It also outlines the governance and accountability arrangements for the Framework.

Under the West Sussex **Collaborative Working Agreement** we have undertaken to work closely and share our collective learning with colleagues across Safeguarding Adults Board, Community Safety and Wellbeing Partnership and Public Health.



WSSCP Business Plan Priorities 2023 - 2026



Priority 1

Strengthening effectiveness of our multi-agency practice

Priority 2

Child Sexual Abuse:
Protecting and safeguarding our children

Priority 3

Tackling Child Exploitation

Priority 4

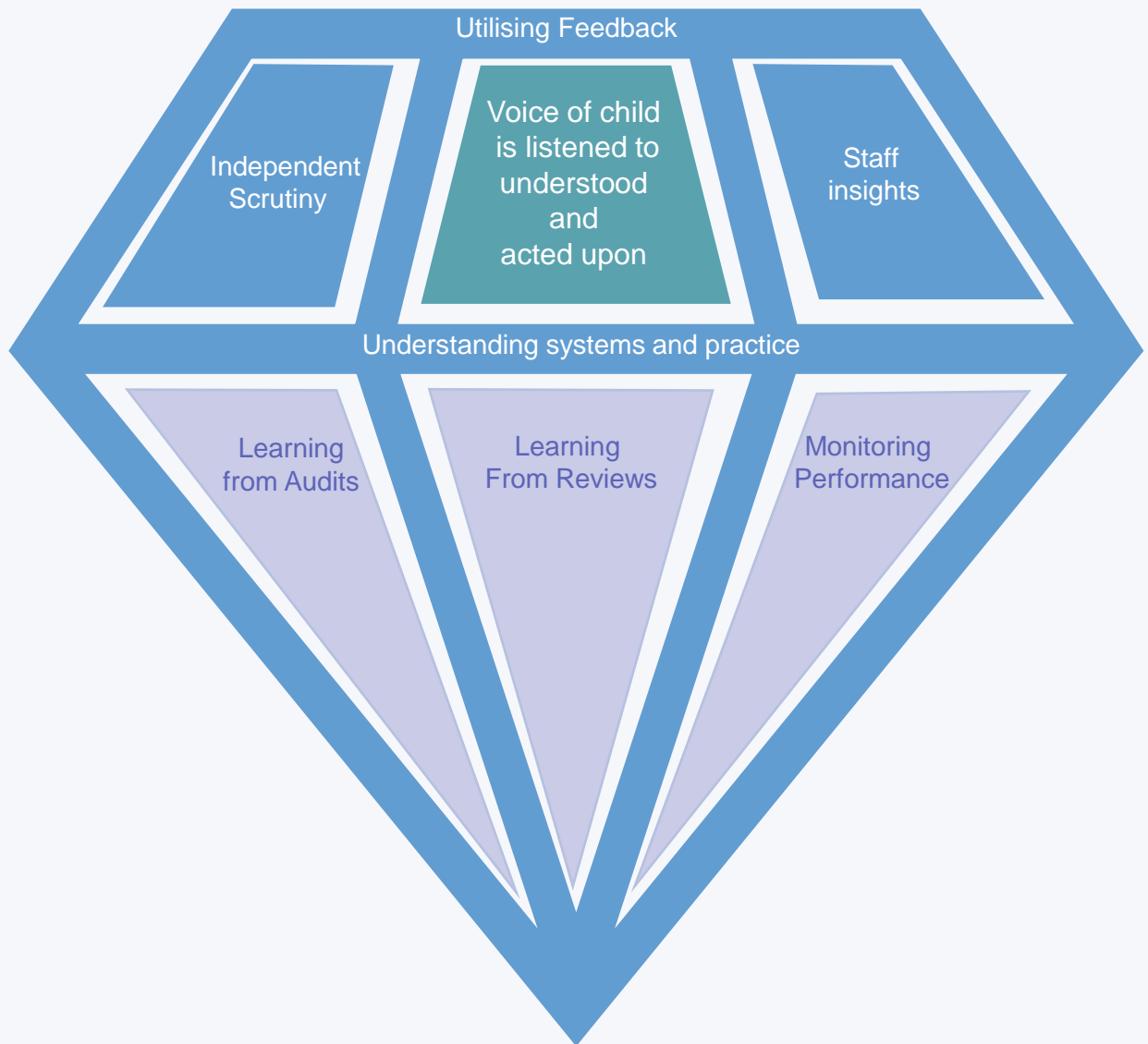
Children as victims of Domestic Abuse

Priority 5

Children's emotional health and wellbeing

Learning and Improvement Framework: improving Outcomes for Children

The learning and Improvement framework summary below, seeks to promote a culture of learning and continuous improvement



Key Sources used to inform Learning and Improvement



Voice of Child and Practitioner Feedback

- ◆ Voice and Participation: obtaining feedback and intelligence both from single agency insights and forums and via WSSCP led initiatives. Feedback from Children and families and practitioners (surveys, evaluation of training).

Local Child Safeguarding Practice Reviews (LCSPR)

- ◆ Direct involvement of practitioners to drive practice improvement and lead on dissemination of learning.

Data

- ◆ Using data to identify risks, issues and trends to develop and test hypothesis around casual factors and mitigation.

Audits

- ◆ Single and multi-agency audits which capture the voice of practitioners and managers
- ◆ Audit programme focussing on themes, systems and practice areas and linked to business priorities and identified risk or issues.

Independent Scrutiny

- ◆ Independent Scrutiny programme which evaluates the impact of partnership work
- ◆ Community voice, including lay members

Learning from others

- ◆ National Research and briefings, e.g. Children's Commissioner
- ◆ Child Safeguarding Practice Review Panel research and review work
- ◆ Research and LCSPRs published by Safeguarding Children Partnerships
- ◆ Inspection Feedback (local and national)
- ◆ Service user feedback, including complaints
- ◆ Peer Review

Using our framework to improve outcomes for children, young people and their families

Audits

Partnership audits include single and multi-agency audits. The audits may be thematic or focus on a specific area of safeguarding. Hearing the **voice of children and their families and practitioners** must be integral to audit work. This includes reflecting on children's and families' daily lived experience, identity and intersecting strengths and needs. This enables enhanced real time learning for practitioners, richer learning for the Partnership and more focussed recommendations for change.

Section 11 Audits

As part of the assurance of their duties under section 11 (s11) of the Children Act 2004 key organisations must have regard to the need to safeguard and promote the welfare of children when discharging their functions. S11 does not give agencies any new functions, nor does it override their existing functions. Instead, it requires organisations to demonstrate that the way they carry out their existing functions considers the need to safeguard and promote the welfare of children. The s11 process requires agencies to self-evaluate and provide assurances against core safeguarding standards.

A pan Sussex approach to collating and scrutinising information, is in place for agencies that work pan Sussex. The local s11 process is aligned to the pan Sussex approach for consistency.



Learning from Child Safeguarding Practice Reviews and Rapid Reviews

The Partnership has a statutory duty to undertake Rapid Reviews when a child dies or is seriously injured, and abuse or neglect are suspected, some of which will result in a Local Child Safeguarding Practice Review (LSCPR). Learning outcomes from these reviews are disseminated widely. Assurance is sought from partner agencies and tested (e.g. via audit and staff surveys) that learning is embedded into multi-agency practice. The WSSCP's Case Review, Improvement and Assurance and Learning and Development Groups work together closely to ensure that this happens consistently.

[The Child Safeguarding Practice Review Panel's](#) (National Panel) reports and briefings provide important learning and challenge to Safeguarding Children Partnerships to improve their systems and practice.

Learning from other Partnerships and Boards, research, statistical neighbours and local intelligence supports our development as an outward facing and ambitious Partnership. This approach together with ensuring a solid foundation of core safeguarding practice is in place will underpin the Partnership journey to excellence.



Using our framework to improve outcomes for children, young people and their families (contd.)



Feedback

Robust feedback processes that are well utilised provide more immediate evaluation of practice. These include compliments or complaints, escalations and planned feedback events with children and families. Developing collaborative processes with practitioners will enable a better flow between operational and strategic decision making and develop practice leadership that is distributed more effectively across the system. The Child Safeguarding Liaison Group will provide an additional opportunity to evaluate and test practice.



Performance Monitoring and Data

Ongoing analysis of data patterns and trends within the WSSCP performance scorecard provides valuable insights into the performance of the partnership in improving outcomes for children. Utilising local and national baselines and targets and comparative national and statistical neighbour data enables us to objectively measure our performance, assess the sustainability of good performance and detect potential issues, risks and opportunities to strengthen practice. Focussing our key performance measures on partnership priority areas and identified issues and risks enables us to maximise our impact for children in West Sussex.



Independent Scrutiny

Independent scrutiny is critical to provide assurance and understanding of the effectiveness of the WSSCP's arrangements.

The WSSCP invites **Lay members** to represent the community's voice because they are ideally placed to undertake this important work objectively. **Children and young people** and **peer reviews** are additional means of providing an alternative perspective and focus on the WSSCP's performance.

The **Independent Scrutineer and Chair's** role is to provide assurance to Lead Partners of the effectiveness of:

- Arrangements to identify and review serious child safeguarding cases;
- Providing objectivity and act as a constructive 'critical friend' promoting a culture of reflection and continuous improvement;
- Evaluating how effectively -
 - (i) the arrangements are working for children and families, and practitioners and managers;
 - (ii) the safeguarding partners are providing strong leadership.
- Reporting recommendations from their scrutiny and assurance activities to Lead Partners.

Using our framework to improve outcomes for children, young people and their families (contd.)



Learning from others

National Research and briefings

National Research will be shared by the WSSCP across the partnership to help us to identify opportunities to strengthen and improve our safeguarding arrangements. This includes:

- Children's Commissioners reports
- NSPCC briefings
- LCSPR repository – held on the NSPCC website
- National reports of significance e.g. Independent Inquiry into Child Sexual Abuse (IICSA).

Inspection Feedback (local and national)

Independent scrutiny from national inspectorates including the Office for Standards in Education, Children's Services and Skills (Ofsted), the Care Quality Commission (CQC), Her Majesty's Inspectorate of Constabulary and Fire & Rescue Services (HMRCFRS), Her Majesty's Inspectorate of Probation (HMIP) and others. These inspections are an important source of learning for the whole Partnership.

Joint Targeted Area Inspection Reports (led by Ofsted, Care Quality Commission and His Majesty's Inspectorate of Constabulary) are of particular significance in terms of multi-agency working.

Learning from Peers

Research and LCSPRs published by Safeguarding Children Partnership such as across Sussex learning from Local Child Safeguarding Practice Reviews and audit work, looking for opportunities to work collaboratively and share learning.



A Culture of Continuous Learning

Our Approach to scrutiny

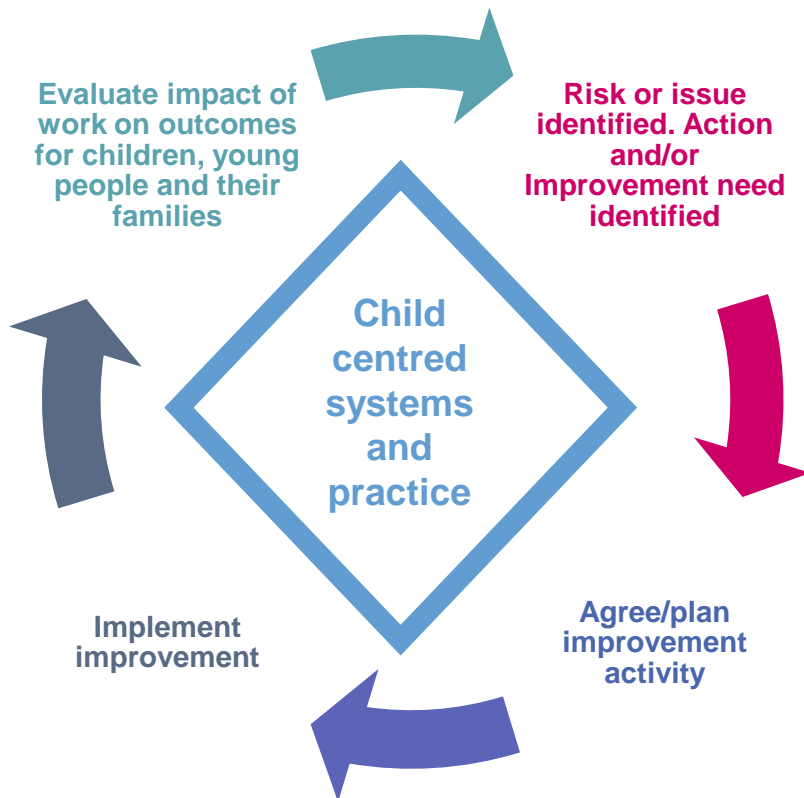
Scrutiny is a multifaceted and systemic approach which brings together and triangulates evidence of single and multi-agency practice, identifies what is working well and where there are concerns in relation to multi-agency practice both at an operational and strategic level.

It will also aid the Partnership's understanding of what supports good safeguarding practice and barriers to improvement to ensure professionals are effectively improving outcomes for children and young people.

Learning Culture

Learning is not an event to attend, but a culture that is present within everything the WSSCP does. A variety of approaches e.g. reflective learning and participation in the Child Safeguarding Liaison Group will increase staff engagement, ownership of decision making and support embedding best practice.

Continuous improvement will be achieved through our commitment to continuous learning.





**West Sussex
Safeguarding
Children Partnership
Learning and
Improvement
Framework**
