

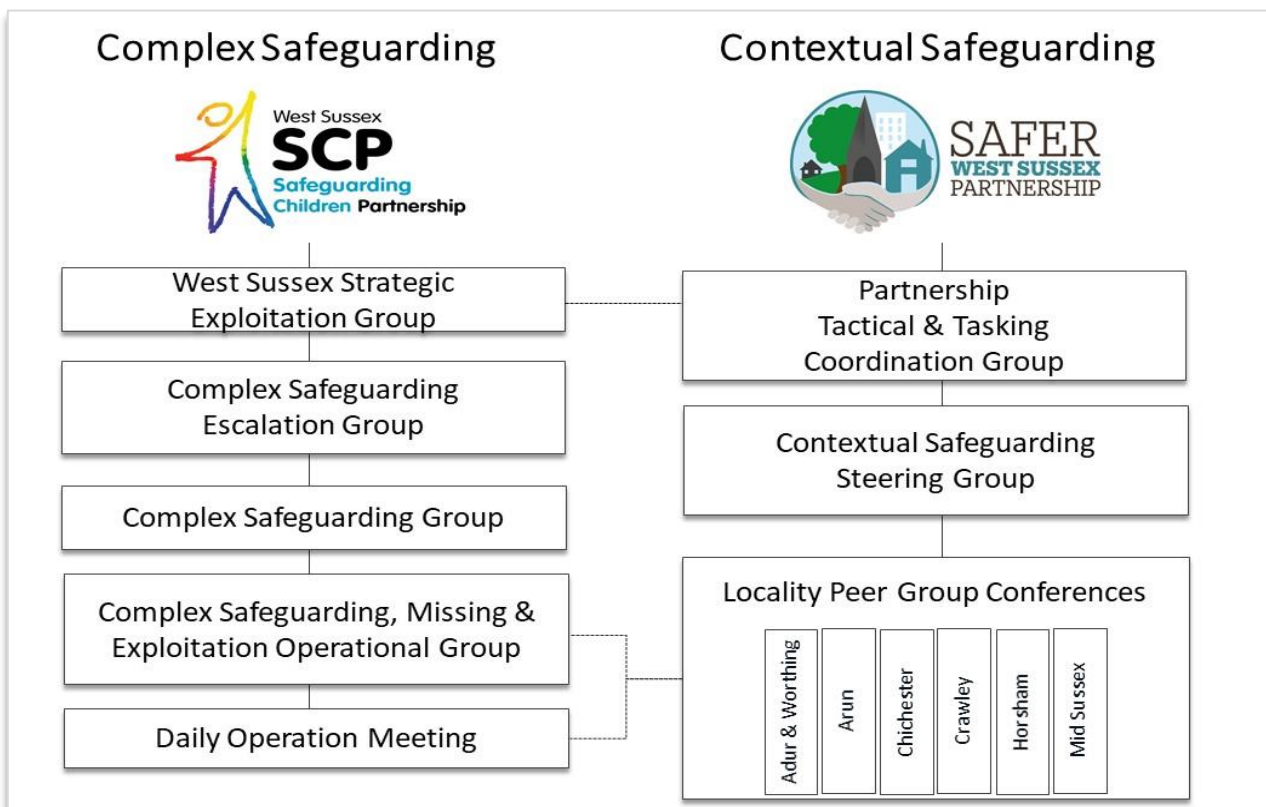
# Complex & Contextual Safeguarding approaches to Child Exploitation & Missing Children

## Management of Vulnerability and Extra Familial Risk

This document outlines the way we work across the partnerships within West Sussex to manage the response to Extra Familial Risk through Complex and Contextual Safeguarding, Child Exploitation (CE) and Missing Children procedures. This includes children at risk of child criminal exploitation (CCE) and child sexual exploitation (CSE); children who go Missing from Home, Education and Care, children involved in or at risk of Modern Slavery, Radicalisation and children who perpetrate serious harm to others.

Strategic governance is managed jointly between the West Sussex Safeguarding Children Partnership and the Safer West Sussex [strategic community safety] Partnership; both of which comprise multi-agency membership and seek to reduce vulnerability whilst increasing safety and wellbeing.

The following chart illustrates the operational management of extra familial risk which will be expanded upon in subsequent pages:



To date, work to embed contextual practice has been driven and founded by the Pan Sussex Principles (see appendix) and has been focused on enhancing the already well-established community safety partnerships across West Sussex to better understand and respond to extra familial harm. This has been achieved in main, through the lens of Child Exploitation. For many partners, working contextually is a natural extension to traditional community safety and problem solving work and this may account for early successes to date. This work is referred to as *Tier 2* Contextual Safeguarding.

However, for some internal colleagues within WSCC People Executive Directorate in particular; Contextual Safeguarding may represent a more significant cultural shift in the way they think about and manage risk and vulnerability. Much more work is required internally to develop and embed contextual safeguarding practice into core child protection, early help and youth justice responses to Extra Familial Risk. This work is *Tier 1* Contextual Safeguarding and requires new ways of working.

At this time; both to bridge the gap internally, and to enable development work to get underway, the strategic management of Extra Familial Risk in West Sussex has been developed in parallel.

Whilst the management of Complex and Contextual Safeguarding responses to Extra Familial Risk may appear silo'd, the system allows for referral between and throughout the continuum to ensure that young people are protected and localities of concern are addressed to reduce vulnerability and increase wellbeing.

Complex Safeguarding procedures are managed by Childrens Services in partnership with Sussex Police under the governance of the Safeguarding Children Partnership. Whereas group and spatial concerns are address in partnership through Contextual Safeguarding procedures which are largely managed on a locality basis by District & Borough Safeguarding and Community Safety under the strategic governance of the Safer West Sussex Partnership.

Technical support is provided for the management of both Tier 1 and Tier 2 Contextual Safeguarding by WSCC Contextual Safeguarding team.

The following pages provide more information about the strategic, tactical and operational management of both Complex and Contextual Safeguarding responses that are bespoke to West Sussex. It is imperative to state that WSCC works in partnership and draws upon the expertise and commitment of a wide range of stakeholders from agencies and organisations across the county and wider region, without whom, much of this work would not be possible.

## Complex Safeguarding

---

### Daily Operational Missing Meeting

#### **Purpose:**

To review all children who have returned from missing within past 24 hours (or during weekend if meeting is on a Monday); all children who have been missing for more than 24 hours; Police Intel, and any CE Notifications received.

The review will consider:

- Risks and harm identified by police whilst child was missing;
- Risks and harm identified when the child returned including what the child disclosed during a return home interview by the Missing Children Team or by Police in their safe and well check;
- Risks and harm identified in circumstances that led to a child going missing;
- Significant harm incidents that happened whilst missing;
- Vulnerability to and risk of harm from exploitation; and
- Perpetrators of serious harm

#### **Format of Daily Operational Missing Meeting (DOM):**

Missing Persons and CE Co-ordinator Sussex Police will create a summary of children who have been missing or found in last 24 hours (or weekend if meeting is on a Monday) or who are still missing.

This summary will include the time the child went missing and was found; the place they were missing from and found and significant places they went whilst missing. The Police identification of harm, indicators of exploitation and any intel concerning peer groups or networks and/or perpetrators of harm will be shared. CSC CE coordinators and Return Home Interview Team Lead will add information from social work and return home interviews, including name of social worker and mosaic number.

The CSC CE Coordinators will add an analytical summary of impact on the child.

The summaries will be individually saved onto Mosaic and emailed to the child's social worker or Lead Professional, their Practice Managers and DSL.

All children who meet the criteria below will be timetabled for discussion at the following Weekly Complex Safeguarding MEOG with invitation to attend sent to SW/LP and DSL:

- Child is being exploited and harmed
- There are significant indicators of exploitation and harm
- The child is perpetrating serious harm to others

A child who has, or is believed to have, suffered significant harm whilst missing will have a referral for a strategy meeting sent to MASH or allocated SW and PM.

Children who have suffered or at risk of serious and significant harm, or who have caused serious harm, will have a 'Need to Know' started. This will be sent to the Practice Manager and Group Manager to be completed and forwarded by them to Service Leads, and Head of Service. The criteria for a 'Need to know' is:

- Missing child, where Head of Service has established escalation is required, (Child Looked After after 24 hours and non-Child Looked After 72 hours).
- Missing family subject to Child Protection processes.
- Incidents that may trigger media interest including children who commit or are victims of serious crimes.
- Cases referred to the Home Office through the National Referral Mechanism as trafficking and / or modern slavery is suspected.

Children who have been missing for more than 24 hours, and are still missing will have an alert sent to PM/GM requesting them to convene a strategy discussion. Missing Police Team will attend strats for children who are still missing, for all other matters requests will be met by MASH/SIU Police.

### **Membership –**

- Missing Persons and CE Co-ordinator, Missing Persons and Child Exploitation Team, Sussex Police
- CE Coordinator (Advanced Practitioner), Children's Social Care.
- Team Leader, Return Home Interviews
- Administrator

## Weekly Complex Safeguarding MEOG

### Purpose:

Children who are suffering or perpetrating harm will have a joined up multi agency response to improve safety. This will include a social work response – i.e. any not open to CSC will be referred to MASH for ‘consideration of a Child and Family Assessment’ where the threshold criteria is met.

The school, community and health are integral to safeguarding the child’s environment. Safeguarding will be led by CSC with contextual safeguarding partners as a fundamental cornerstone of practice.

### Format:

Children who are identified by the Daily Operation Missing Meeting as having come to harm or where there are indicators of harm or exploitation will be scheduled for discussion at weekly Complex Safeguarding MEOG.

A time slot invitation to attend weekly Complex Safeguarding MEOG will be sent to SW/LP/PM and DSL and Contextual Safeguarding Delivery Officer on the day that the harm or risk of harm was identified. A conference call facility will be available.

The agenda will include a short summary of why the child is at heightened vulnerability and the circumstances complex, as outlined on the DOM or Complex safeguarding and CE notification.

Together with the social worker, the multi-agency group will:

- Seek to understand the circumstances that led to a child being exploited, going missing and/or coming to harm;
- Seek to understand what happened during the missing episode and any disclosures or observations of a child upon their return or in the return home interview;
- Consider evidence and indicators of exploitation or vulnerability to exploitation or criminality/serious harm to others;
- Review interventions/support in place to repair harm and reduce likelihood of further missing episodes or harm;
- Together create an up to date and dynamic safety plan, identifying any actions required which could include:
  - additional support needed for the child, including health or pastoral support in school and agree who will arrange this;
  - develop any contextual safeguarding response (including disruption of potential perpetrators or organised crime groups);
  - address blockages in access to services or actions being completed and ensure Pan Sussex Procedures and statutory requirements are being adhered to; and

- Identify themes and trends with children's vulnerabilities, places and perpetrators to develop targeted responses.

### **Impact of MEOG:**

- ❖ The safety/response plan will have been reviewed, developed and any blockages to implementation been addressed;
- ❖ Where ongoing difficulties are evident, the relevant agencies will be identified and escalation through LSCP will take place if required;
- ❖ Ensure Pan Sussex Procedures and statutory requirements including Worthing Together 2018 are adhered to;
- ❖ Identify themes and trends with children's vulnerabilities, places and perpetrators
- ❖ Ensure demonstration of effectiveness of impact of activity being undertaken

**The case discussion will be minuted by the Complex Safeguarding MEOG Administrator, and once approved by the Chair will be circulated to all attendees and relevant managers. This is in adherence to GDPR.**

**It is the responsibility of all agencies to ensure the safety plan/response plan is recorded onto the child's record on mosaic/police/health/school and other recording systems in accordance with GDPR.**

### **Membership –**

Chair (SL/SDM for SAS and DI Police Missing Exploitation Team)

- Missing Persons and CE Co-ordinators, Missing Persons and Child Exploitation Team, Sussex Police
- CE Coordinators (Advanced Practitioner), Children's Social Care (Deputy Chair)
- Team Leader, Return Home Interviews
- Deputy Designated Nurse Safeguarding Children
- MASH, Education Lead
- Attendance officer, Alternative Provision College/ DSL
- YOS Team Manager
- Commissioning Manager for children's residential placements
- Practice Manager Foster Care or placements
- Hub Lead for Early Help and Leaving Care
- Senior Practitioner, Barnardo's
- Lead Practitioner, asphaleia
- Advanced Practitioner, CAMHS
- For each child presented – their Social worker or lead professional and Practice Manager
- Administrator and minute taker (Complex Safeguarding MEOG)

## Escalation and Significant Complexity:

### Complex Safeguarding Group

#### Purpose

Where we believe that there is significant complexity impacting the ability of the multiagency group to ensure robust safety planning the child will be referred to the **Complex Safeguarding Meeting** (previously known as CHRA).

#### Format

The social worker and other key professionals will join this multi-agency team at a multi-agency Case Formulation Meeting for holistic reflection and planning. These meetings take place weekly and take 2 hours using the Trauma Recovery Model to organise and coordinate the child's safety plan.

A case chronology is summarised in advance of these meetings by each agency so that a holistic historical understanding can enable the group to understand what has happened to the child and what challenges and traumas are affecting their development and behaviours.

All key professionals including school, residential or foster carers, and support workers will be invited to attend this meeting.

#### Membership

- SDM for Adolescents (Chair)
- Psychologist, CHAMPS
- Advanced Practitioner for Complex Adolescents
- Deputy Designated Nurse Safeguarding Children
- Associate Advisor, Virtual School
- Team Manager, YOS
- Service Lead children's Residential Placements
- Senior Practitioner, Barnardo's
- Advanced Practitioner, CAMHS
- Team Manager, CHRA Youth Interventions Team
- Police Constable, Missing Persons Team
- Hub lead/Contextual Safeguarding Lead

## Escalation Group

### **Purpose:**

Children who continue to suffer or perpetrate harm or where harm is escalating and the child is at risk of entering secure accommodation, Senior Management will have oversight and scrutiny of decision making and planning. The multi-agency senior management group will ensure effectiveness of activity being undertaken and the impact of safety plans.

**This meeting will be used to consider the use of secure accommodation or where a child is at very high likelihood of entering Youth Detention Accommodation. Where complicated/Complex Abuse procedures are enacted, it may be appropriate for progression and review to take place through this group.**

### **Format:**

This is not a standing group and will be chaired by SL or AD/HOS.

A summary of situation (child's history and child's safety plan) will be prepared by the Practice Manager and sent in advance of the meeting.

The Practice Manager will attend with social worker and Group Manager and all relevant involved agencies.

### **Membership –**

- Head of Service/Service Leader CSC (Chair)
- DCI Police
- Head of Safeguarding, WSCC
- Service Manager YOS;
- Safeguarding Lead for Children, Health
- General Manager, CAMHS
- DSL Lead Education;
- Lead for Contextual Safeguarding;
- Team Manager Barnardo's,
- Service Leader, residential or Commissioning
- Administrator



## Exploitation Group – Local Safeguarding Children’s Panel

### **Purpose:**

The group is accountable and will provide updates to the Executive and Safeguarding Children Partnership (SCP).

This group will hold to account, challenge and develop the work across the partnership within West Sussex in respect of Child Exploitation (CE). This includes children at risk of child criminal exploitation (CCE) and child sexual exploitation (CSE); children who go Missing (Home, Education and Care), children involved in or at risk of Modern Slavery and children who perpetrate serious harm to others.

The West Sussex Safeguarding Children Partnership (SCP) has the overall responsibility

- To coordinate what is done by each person or body represented by the partnership for the purposes of safeguarding and promoting the welfare of children in the area; and
- To ensure the effectiveness of what is done by each such person or body for those purposes.

In this respect it has a monitoring function on children at risk of exploitation.

### **Format:**

The Exploitation group provides strategic oversight of missing, exploited and trafficked children. This group has multi-agency representation at a senior manager level and is responsible for policy and measuring impact of the work to address these issues and improve practice.

- Consistently review, develop and respond ways to engage all children and young people in respect of exploitation so that their voices are heard, their thoughts, lived experiences and feelings are valued, and the child or young person remains central to all our practice.
- Scrutinise thresholds in respect of exploitation; provide support and challenge to all agencies to ensure consistency in partners practice.
- Ensure that partners are accountable for the Exploitation Improvement Plan.
- Ensure that the partnership understands the threats and risks of exploitation and oversees and challenge the tactical direction to mitigate these and to support the county wide Exploitation Strategy.
- Monitor performance and gaps in interventions, identifying success and ensuring there is a demonstrated improvement to practice through the exploitation audits.
- Ensure policy, procedures and learning are fit for purpose.

- Ensure partners are proactively dealing with contextual harm.
- Exploitation is identified and responded to at the earliest opportunity.
- Ensure all services are working effectively together and a difference is being made for each child- identifying what is working well, resolving issues, learning from best practice and addressing barriers that are raised; This includes children placed out of county.
- Share and develop information, knowledge and raise awareness of exploitation throughout the county (internally and externally).

### **Membership –**

DCI, Police – Chair

Head of Safeguarding

Children’s Social Care - Service Development Manager for Adolescents

Health – Designated and Named Safeguarding Nurses (incl sexual health)

Education - Safeguarding and Virtual School representation.

Voluntary sector (as identified) and / or commissioned services (as identified)

Exploitation Lead for Early Help

Leaving care – Transition/Adults services

Service Manager Youth Offending Service

Contextual Safeguarding Manager

[Exploitation Group Terms of Reference \(July 2019\)](#)

## Contextual Safeguarding

---

### Peer Group Conferences

#### **Purpose:**

District & Borough locality based multi-agency groups, 6 Peer Group Conferences are held on a monthly basis throughout West Sussex (1 per locality).

The PGC takes a systemic, locality based approach to managing extra familial risk; including those who are at risk of causing and/or experiencing harm, other young people likely to be involved and the contexts within which harm is occurring including within peer groups, schools and neighbourhoods. PGC's develop and oversee interventions across these contexts to reduce harm and avoid escalation to the point of crisis/thresholds for statutory intervention by WSCC Children's Services.

#### **Format:**

West Sussex Peer Group Conferences have tactical oversight of group and/or locality based exploitation and low level concerns. Groups are managed locally and consequently may present elements of local variance. However all groups have multi-agency representation at manager/senior officer level. As such, groups have the following responsibilities:

- Share information and analysis from relevant professionals in advance of locality meetings
- Agree co-ordinated interventions across relevant agencies to reduce risk for individuals or groups in the context of their schools, neighbourhoods and wider locality.
- Review cases and ensure that actions have been taken to reduce victimisation, disrupt and sanction offending and prevent harm
- Ensure that agreed actions are carried out in a timely manner
- Escalate strategic issues to the Contextual Safeguarding Steering Group
- Escalate cases and operational issues to the Multi-Agency Child Exploitation Operations Group (MEOG) or Complex Safeguarding Escalation Group (MACE).
- Contribute to system-wide best practice around harm prevention

**Membership** – *determined locally, but typically includes:*

- District/Borough Community Safety / Safeguarding Team(s) [Chair]
- Community Wardens
- West Sussex Council - Contextual Safeguarding Team
- West Sussex County Council – Children’s Services Adolescents Team
- West Sussex County Council – Early Help (formerly IPEH)
- West Sussex County Council – Youth Justice System (YJS)
- West Sussex Schools and Education Providers
- Sussex Police – Prevention Inspector/Sgt, PYO, PSCO
- Community & Voluntary Sector Representatives (as required)

## Contextual Safeguarding Steering Group

### Purpose:

The West Sussex Contextual Safeguarding Steering Group is a multi-agency strategic partnership consisting of key representatives from organisations and authorities across West Sussex.

The purpose of the steering group is to:

- 1) Understand the model of contextual safeguarding and the applicability of its implementation in West Sussex
- 2) Ensure there is co-ordinated and effective multi-agency work to promote contextual safeguarding practice across the County
- 3) Empower front-line practitioners (inc. those working in WSCC Children's Services) to draw upon the tools and skills required to understand, adopt and embed contextual safeguarding practice
- 4) Steer appropriate work to achieve relevant aspects of the West Sussex Child Exploitation Improvement Plan regarding Contextual Safeguarding

### Format:

The Steering Group provides strategic oversight for the development of contextual safeguarding across West Sussex. The group has multi-agency representation at a senior manager level and is responsible for policy, best practice and measuring impact of locality managed responses to Extra Familial Risk and improve practice.

### Membership –

Group membership comprises professional representation from the following Agencies/Organisations:

- District/Borough Community Safety / Safeguarding Team(s) [Chair]
- West Sussex Council - Contextual Safeguarding Team
- West Sussex County Council – Children's Services Adolescents Team
- West Sussex County Council –Early Help (formerly IPEH)
- West Sussex County Council – Youth Justice Service (YJS)
- West Sussex County Council – Safeguarding In Education Team
- Sussex Police - Partnerships Manager, Prevention Inspectors & Missing Person Team
- Probation Service
- West Sussex Schools Safeguarding representative
- West Sussex Alternative Provision Centre
- Clinical Commissioning Group Safeguarding Lead
- West Sussex Sexual Health Commissioning

## Partnership Tactical & Tasking Coordination Group - Safer West Sussex Partnership

### **Purpose:**

The Safer West Sussex Partnership brings together community safety partnerships (CSPs), along with other key agencies, to provide a coordinated approach to reducing crime and anti-social behaviour in West Sussex. Child Exploitation is one of seven strategic priorities held by the Safer West Sussex Partnership and this includes work to tackle Sexual and Criminal exploitation.

The Partnership Tactical Tasking & Coordinator Group (PTCCG) was formed in 2018 and meets monthly to identify specific areas of threat, harm, risk or vulnerability from performance assessments or emerging patterns of crimes or incidents. To date, the group has been primarily focused on exploitation where there are links to Serious and Organised Crime.

The group is accountable to, and provides updates and escalation to the Safer West Sussex [strategic community safety] Partnership.

### **Format:**

The PTCCG has multi-agency representation at a senior manager level and works to provide a mechanism for partners from a wide range of organisations to identify crime and disorder priorities which require resourcing, expertise or interventions from more than a single organisation, or additional specialist resources.

- Effective management of priority areas of business particularly where threat risk or harm to or from individuals or communities is identified.
- Ensure that relevant aspects of the Exploitation Improvement Plan are completed.
- Ensure partners are proactively dealing with contextual harm.
- Exploitation is identified and responded to at the earliest opportunity.



## **Membership –**

Sussex Police

WSCC Community Safety & Wellbeing, Contextual Safeguarding, Childrens Services (inc Early Help) & Education,

West Sussex Fire & Rescue Service

Probation & Youth Justice Service

Districts & Broughs

Health including West Sussex Public Health & Public Health England

Barnardos

Victim Support

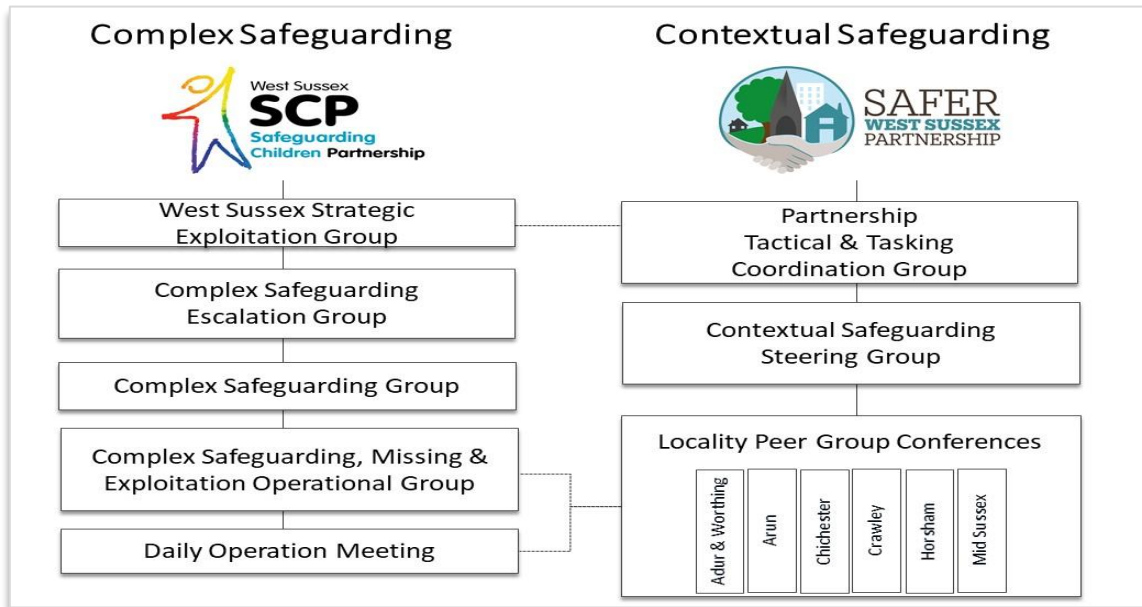
Drug & Alcohol Action Team

Office Police & Crime Commissioner

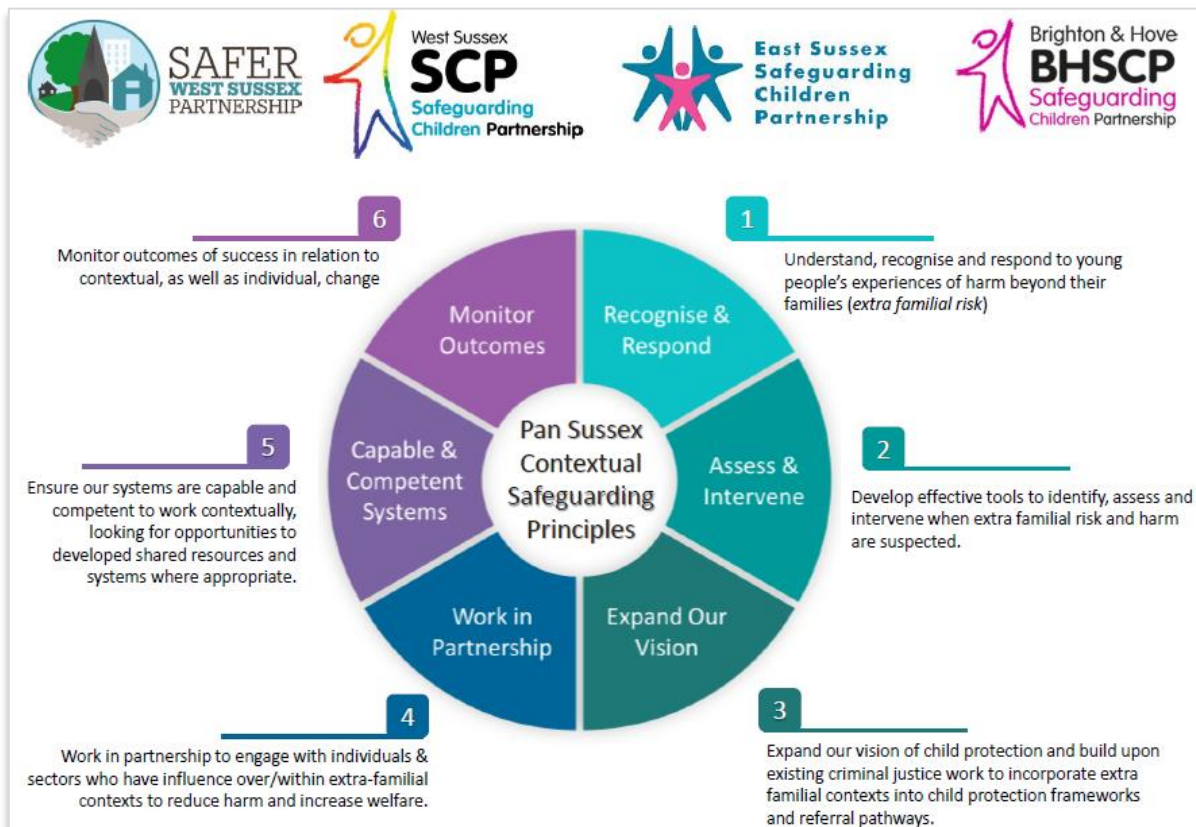
HMP Ford

## APPENDICES

### Governance & Meeting Structure for Managing Complex & Contextual Safeguarding

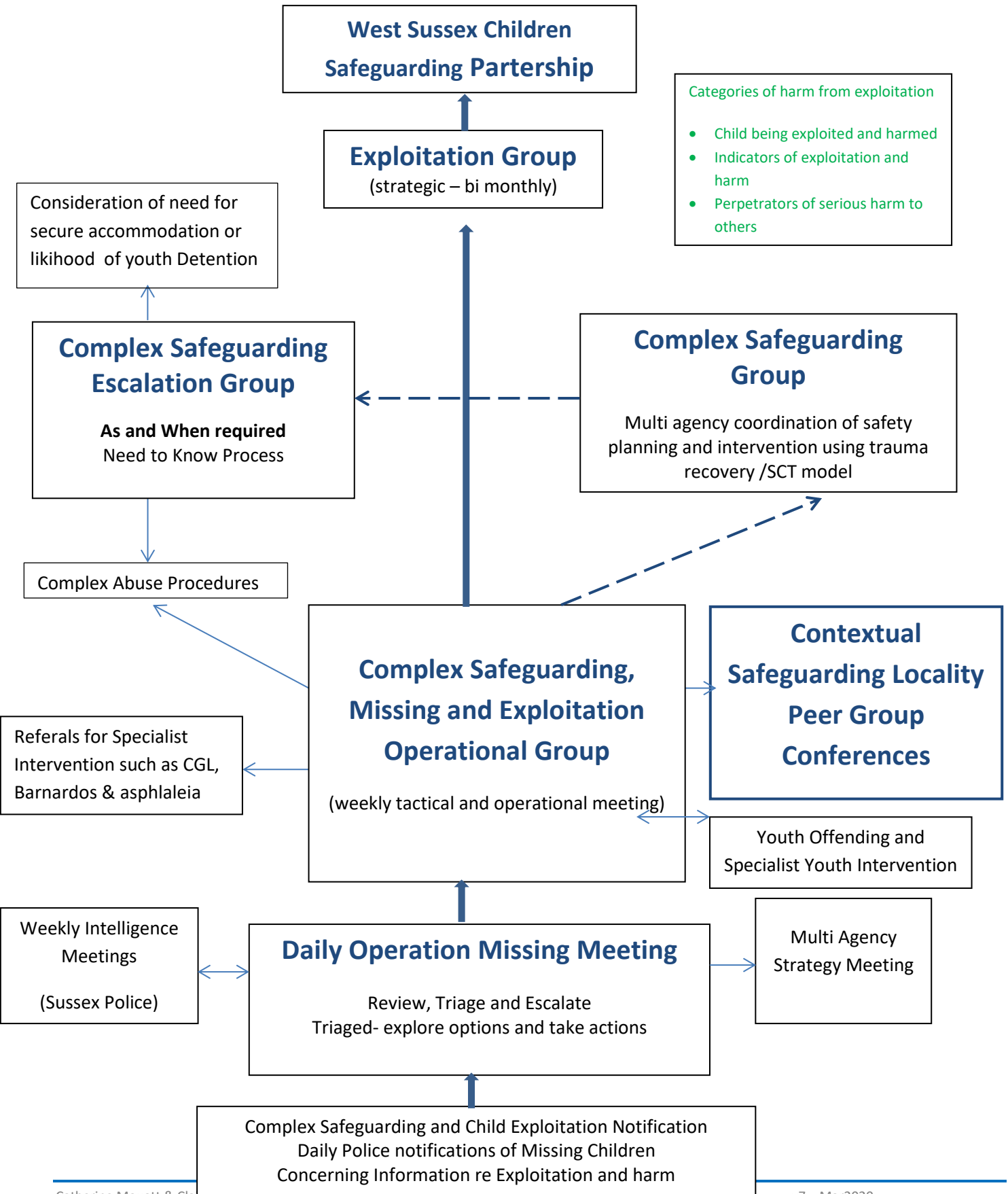


### Pan Sussex Contextual Safeguarding Principles





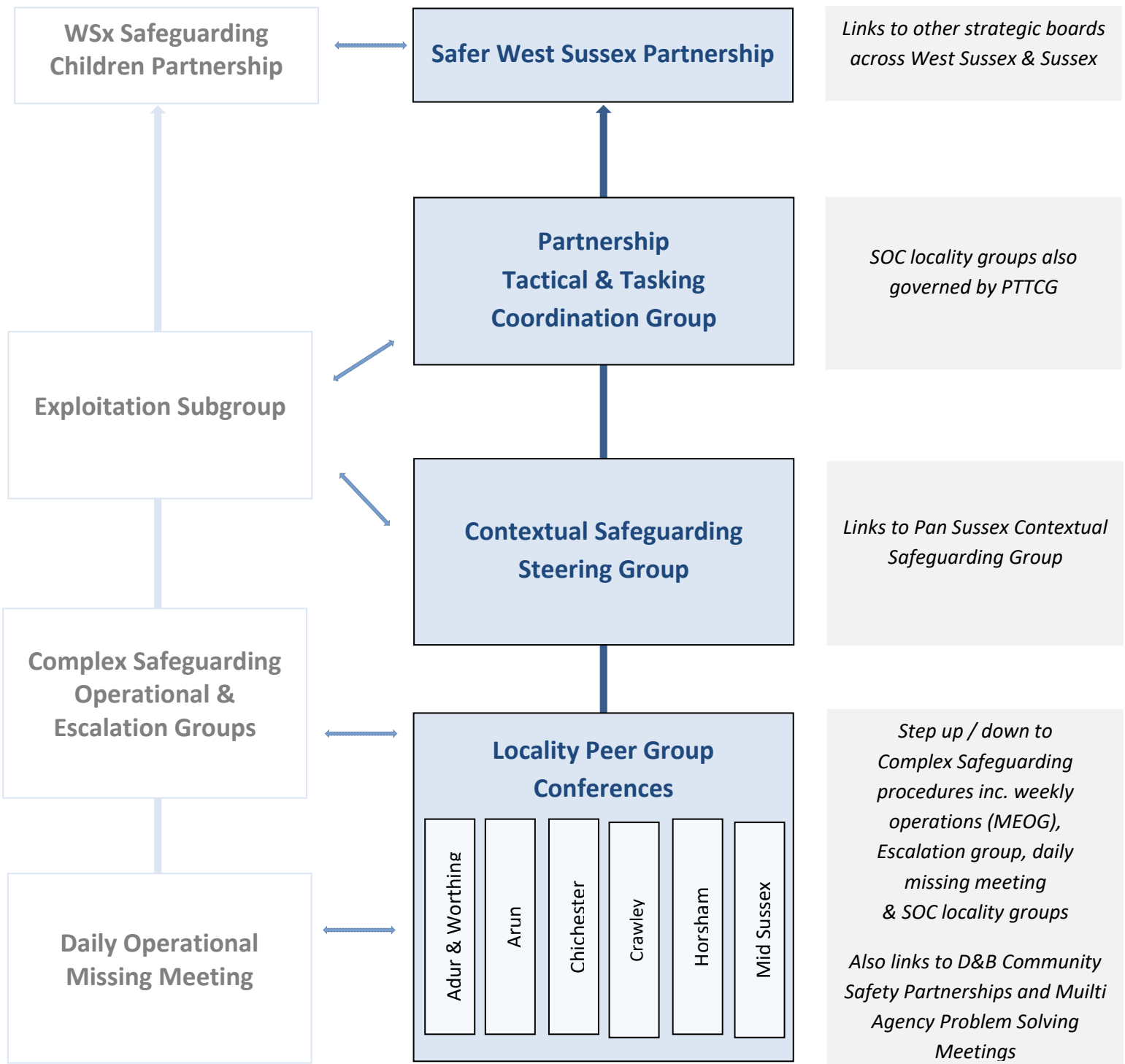
# Complex Safeguarding and Flow Chart



Categories of harm from exploitation

- Child being exploited and harmed
- Indicators of exploitation and harm
- Perpetrators of serious harm to others

# Contextual Safeguarding Meeting Structure Flow Chart



## COMPLEX SAFEGUARDING & CHILD EXPLOITATION NOTIFICATION

First Name of child		Name of worker completing notification	
Surname of child		Agency of worker completing notification	
Age of child		Email Address of worker completing notification	
D.O.B.		Role of worker completing notification	
Address of child		Telephone number of worker	
Postcode		Date form completed	
Telephone number of child		Mosaic number	
Status of child		Gender (used for equality monitoring)	
Ethnic Group (used for equality monitoring)		School / College	

**Why is this child vulnerable to exploitation and harm or perpetrating serious harm?**

*This should be a concise and analytical summary of what has led to the exploitation and harm (push/pull factors) and what is currently happening. There is a section below if you want to add further detail.*

**Professional Judgement (based on evidence above):**

- |  |  |
|--|--|
| <input type="checkbox"/> Child is being exploited and harmed   | <input type="checkbox"/> Child Sexual Exploitation   |
| <input type="checkbox"/> Indicators of exploitation and harm   | <input type="checkbox"/> Child Criminal Exploitation |
| <input type="checkbox"/> Perpetrator of serious harm to others |  |

**Specialist Intervention allocated:**

**Other Assessments attached:** (e.g. Child and Family Assessment / Early Help Plan)

**The questions below are here for you to complete if you want to add further detail, or to assist with critical analysis – they are not mandatory questions.**

**Recent Incident / Description of exploitation:**

*(Has been a victim of sexual/physical assault/group attack? Talks about or witness to sexual exploitation, recent high profile incident or violence? Threatened or groomed by individual or on social media? Receiving expensive items or unknown items that are unaccounted for by parent/carer? Presentation on return from a missing episode?)*

**Suspicious:**

*(Is sexting? Sending nude images of themselves? Being seen at hotels and/or taxi ranks? Peers involved with exploitation/risky or concerning behaviour? Being accompanied to appointments with unknown adult? Arrested for violent crime? Concerns about witness intimidation? Friends being organised by crime groups – have an ‘elder’? Family involved with serious offending? Identified as gang affiliated? Present on social media gang/music videos? Physical injuries without explanation?)*

**Possession:**

*(Has multiple phones/sim cards? Carrying of weapons? Arrested for carrying of knife/blade or for holding firearms? Arrested with drugs intent to supply? Possession of large quantities of cannabis/other drugs?)*

**Relationships:**

*(Older associates? Been found in car with older unrelated adults? Relationship concerns (e.g. Controlling, abusive) relationship? Entering/leaving vehicles with unknown adults? Multiple callers attending child’s accommodation/calling?)*

**Situations:**

*(Arrested or found out of home area? Travelled long distance during missing? Reports of missing? Missing from education? Feels unsafe anywhere? ‘sofa surfing’? frequenting areas known for risky activities? Whereabouts unclear/unknown day/night?)*

**Substance Misuses:**

*(Hospitalised for drug/alcohol consumption? Using drugs and/or alcohol?)*

**Child / Family History and any other vulnerabilities:**

*(Experienced neglect/emotional/sexual/physical harm/disrupted care arrangements? Parental substance misuses/mental health/domestic abuse? Risk of family/placement breakdown? Rapid behaviour change? Child vulnerable because of low self-esteem/mental health/disability/developmental problems/social isolation/uncertainty about sexual identity? Child vulnerable because of ethnic or cultural difference. Child is a migrant/asylum seeker/trafficked? Self – harming and/or suicidal attempts and/or eating disorders?)*

**Strengths and Support:**

*(Strengths in child, engagement in activities, positive relationships? Strengths in family, carers, network? Strengths in community, school, local knowledge, stability in relationships, who loves this child, where do they see they belong?)*

**Education:**

*(Change of school, APC placement, manage moves, EHE, reduced timetable, attendance, academic ability/SEND, recent changes to presentation and behaviour, poor engagement)*

**Who are the other professionals involved?**

*(What are they doing, is the child or family engaged with them, how often do they see the child/family etc.)*

**Any other information:**

Please ensure that the West Sussex LSCP Multi-Agency Child Exploitation Procedures and guidance for professionals working with children are followed and this document is uploaded to your recording system and a copy sent to [csehub@westsussex.gov.uk](mailto:csehub@westsussex.gov.uk)